

icSuper
GPO Box 89
Melbourne IC 3001



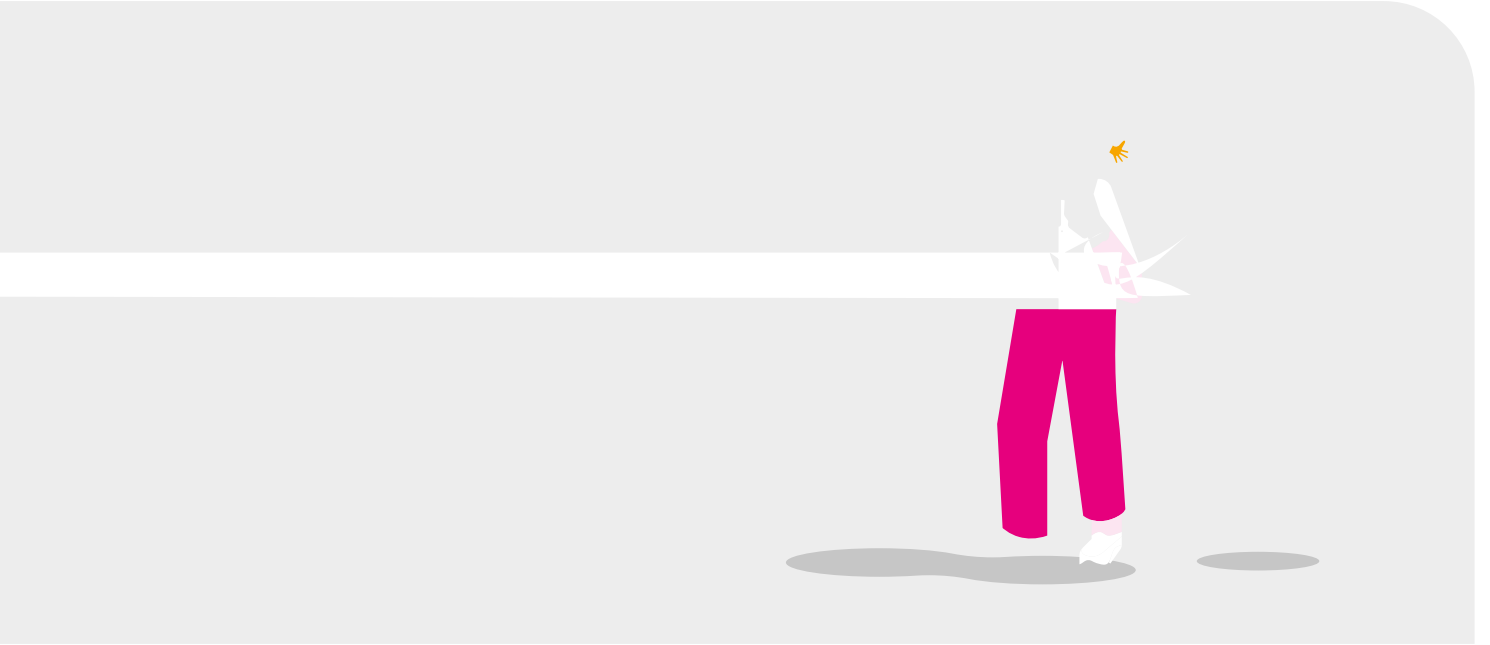
Part of Aware Super



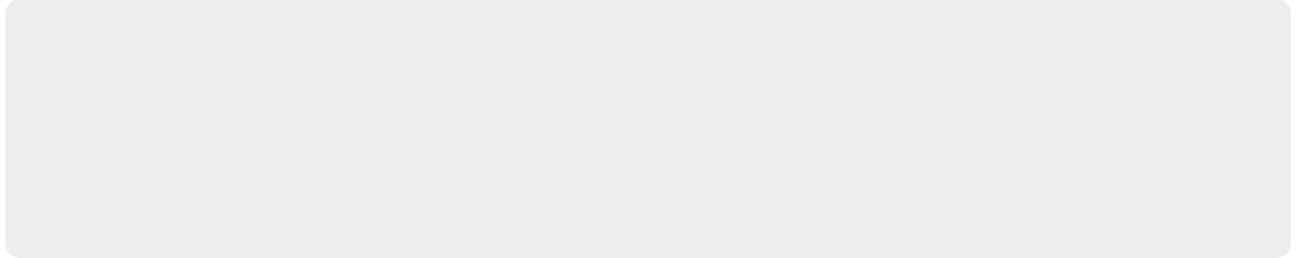


Read this notice to learn about all the changes and how they affect you. You can also visit [www.aware.com.au](#) where you can read more about the icSuper brand retiring and learn more about Aware Super.

While the icSuper brand is being retired, you'll continue to have access to all the information, tools and support you need to help you plan your future with confidence. You can feel assured your super is in safe hands.



A USI is used to identify super funds and individual super fund products for super contributions and electronic rollovers.



Communication Preferences

Your communication preferences let us know how you'd like to receive information from us and the type of information you want us to send you.

These preferences will be updated in your online account from [this link](#). Where possible, your previous choices will be reflected in your member account. However, some of the options may have changed.

Once your account has changed to Aware Super, you can log in to Member Online and go to

